

Anatomy Assessment solutions from Primal Pictures

Flexible assessment tools from the leader in 3D human anatomy

Encourage optimal outcomes with customizable, integrated assessment tools for face-to-face or remote learning.

Engage your students with tailored assessment tools that integrate into your LMS or virtual learning environment.

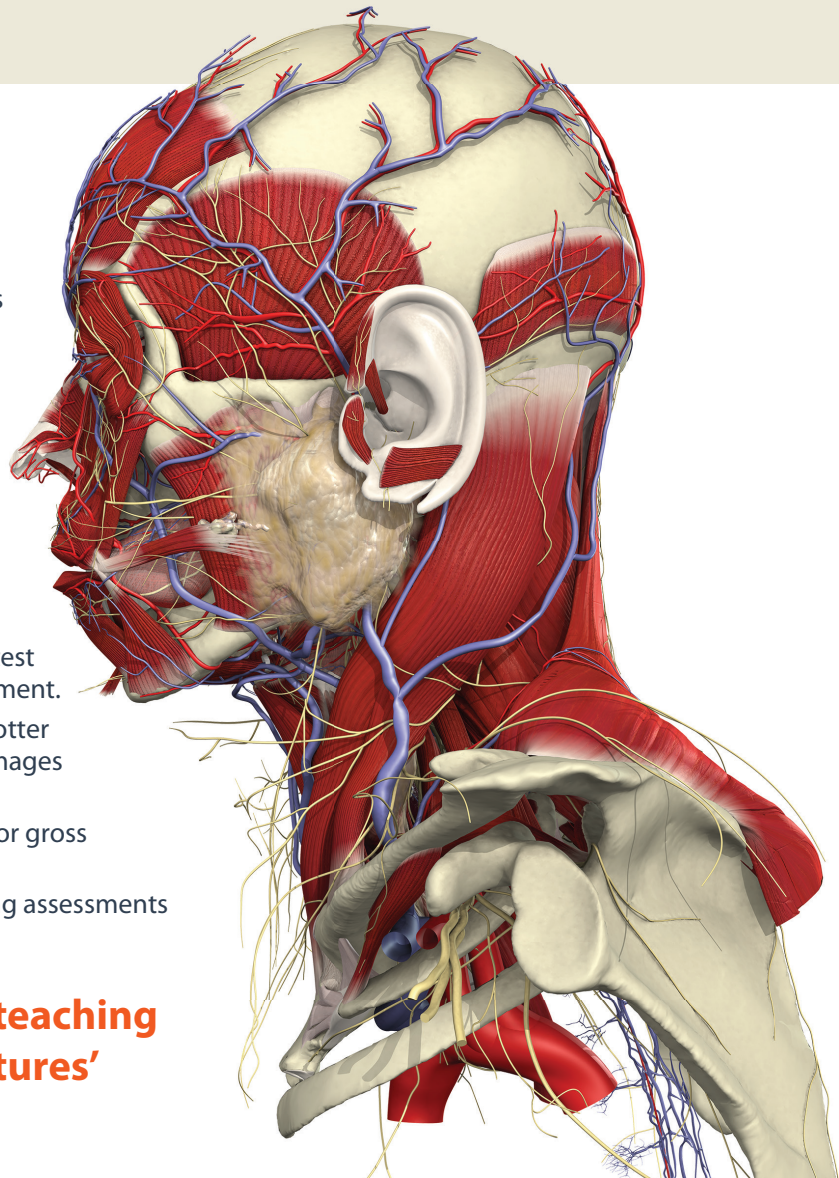
Subscribers to Primal Assessment:

- Use Primal's gold-standard, accurate human anatomy model as the basis for assessing student performance across medical or health science curricula.
- Gain access to customizable assessment creation tools for accurate student evaluation.
- Encourage student self-assessment in a low pressure, guided learning environment.
- Create assessments for either virtual or in-person sessions.

Primal Assessment Options

- PALMs – Gain oversight of student performance with flashcard-style assessment tools.
- Anatomy & Physiology – Guided learning resource to test understanding of core concepts; allows for self-assessment.
- Real-Time – Create bespoke anatomical models for spotter assessments, ABC assessments, labelled assessment images and even bespoke coloring book images.
- What is, Where is? – A comprehensive question bank for gross anatomy recognition.
- Atlas – Easily extract anatomy content to edit – creating assessments to your exact specifications.

Achieve your in-person or remote teaching and learning goals with Primal Pictures' assessment tools.



Visit www.primalpictures.com to learn more.